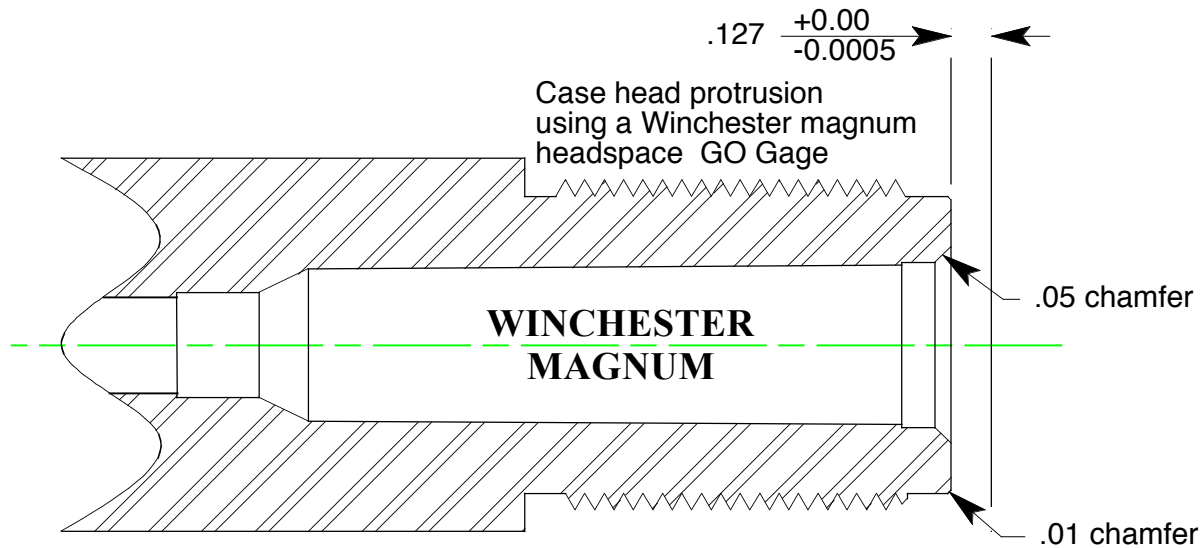


WINCHESTER MAGNUM ACTION ONLY



Warning:
When installing a barrel the Headspace must be verified by use of a gage. Failure to do this may result in damage to the firearm and injury to the shooter.

Unless otherwise specified
Diminsions are in Inches
TOLERANCES:
ANGLES $\pm .5^\circ$
FRACTIONS $\pm .015$
.00 $\pm .01$
.000 $\pm .005$
.0000 $\pm .0005$

ENGINEER: M. BORDSON

BADGER ORDNANCE

1209 SWIFT ST.
816 421-4956

N. KANSAS CITY, MO 64116
FAX 816 421-4958

BARREL THREAD FOR M2008 & M 2013
SHORT MAG ACTION

A

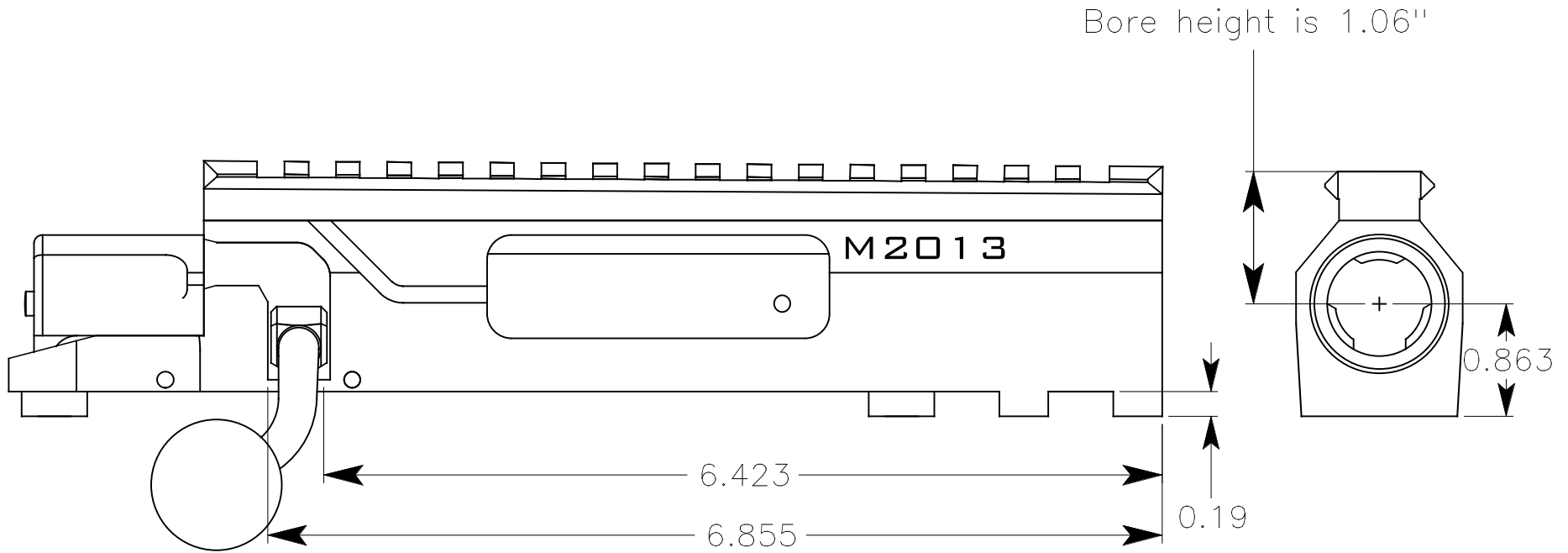
Dwg No.
100-01-01A

Part No.
100-01A

Scale NTS

Date: 1 June 2013

Page 1 of 1



This product is warranted against defect of material or manufacture. No liability is expressed or implied for damage or injury which may result from improper installation or use of this product

Unless otherwise specified
 Diminsions are in Inches
 TOLERANCES:
 ANGLES $\pm .5^\circ$
 FRACTIONS $\pm .015$
 .00 $\pm .01$
 .000 $\pm .005$
 .0000 $\pm .0005$

ENGINEER: M. BORDSON

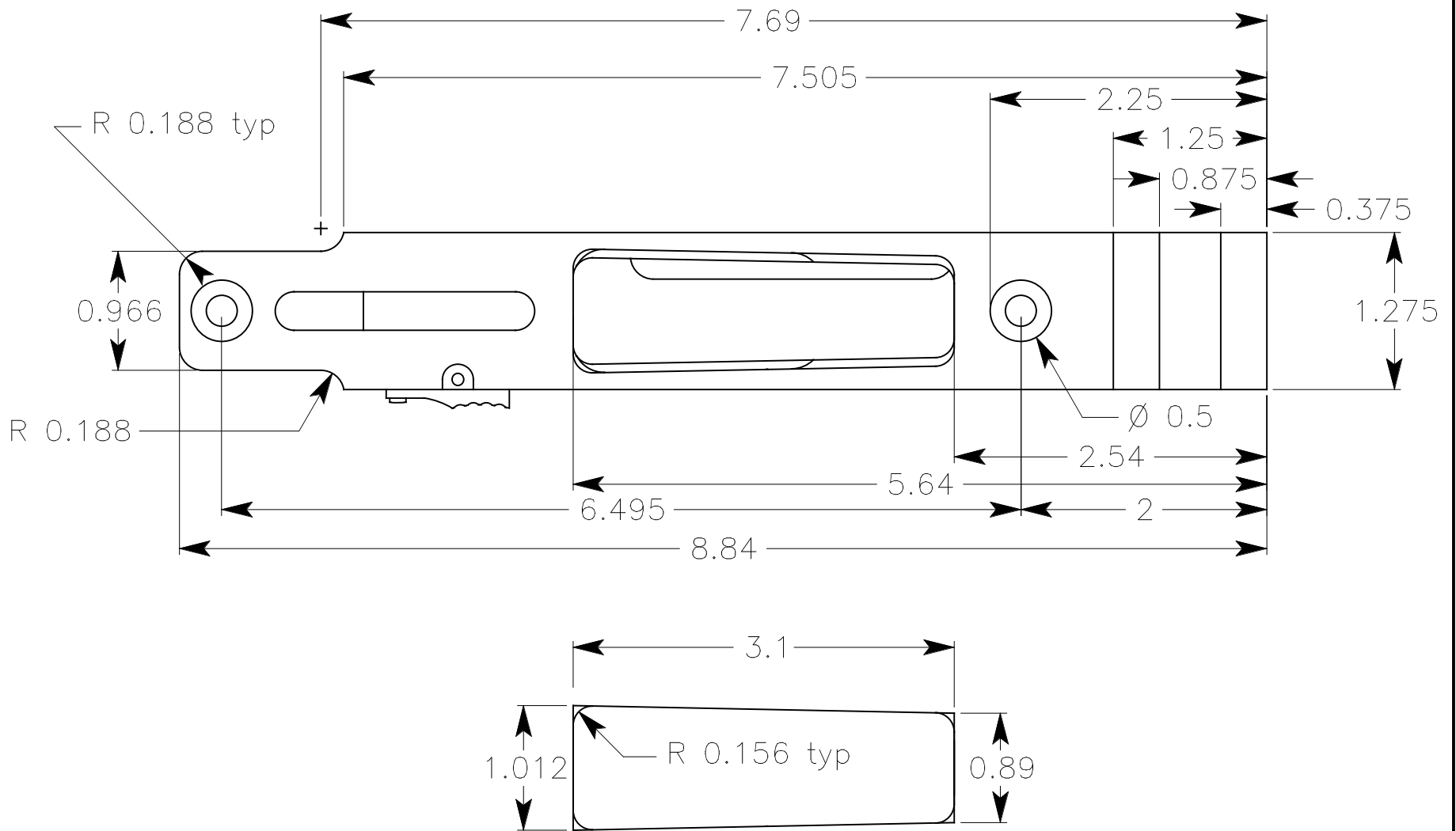
BADGER ORDNANCE LLC

1209 SWIFT ST.
 B16 421-4956

N. KANSAS CITY, MO 64116
 FAX B16 421-4958

Action Inlet M2008 & M2013 Short Action

A	Dwg No.	100-20-01	Part No.	100-20 100-30		
	Scale	NTS	Date:	1 June 2013	Page	1 of 3



Unless otherwise specified
 Diminisions are in Inches
 TOLERANCES:
 ANGLES $\pm .5^\circ$
 FRACTIONS $\pm .015$
 .00 $\pm .01$
 .000 $\pm .005$
 .0000 $\pm .0005$

BADGER ORDNANCE

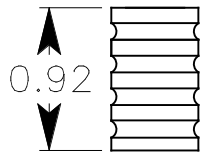
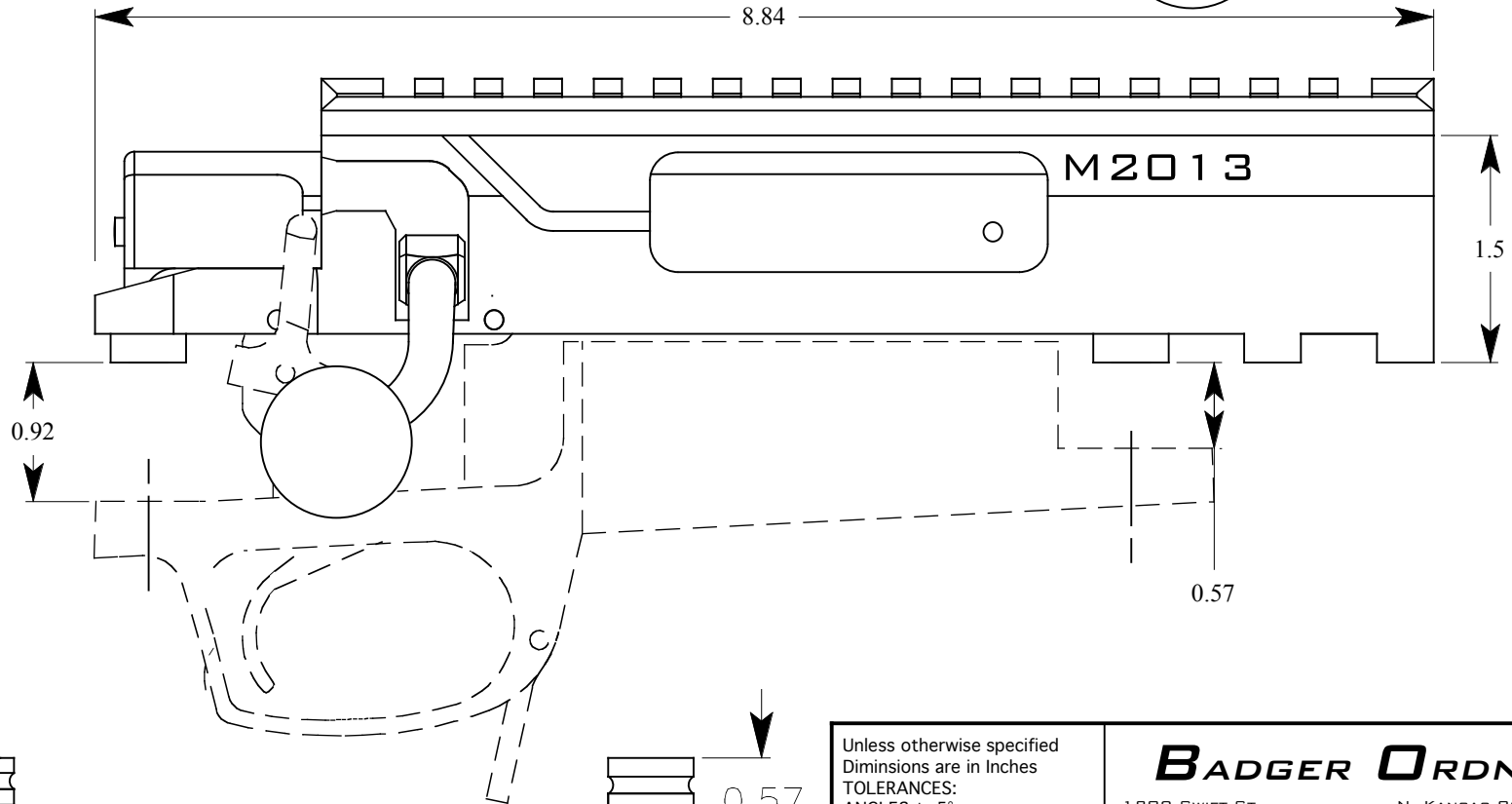
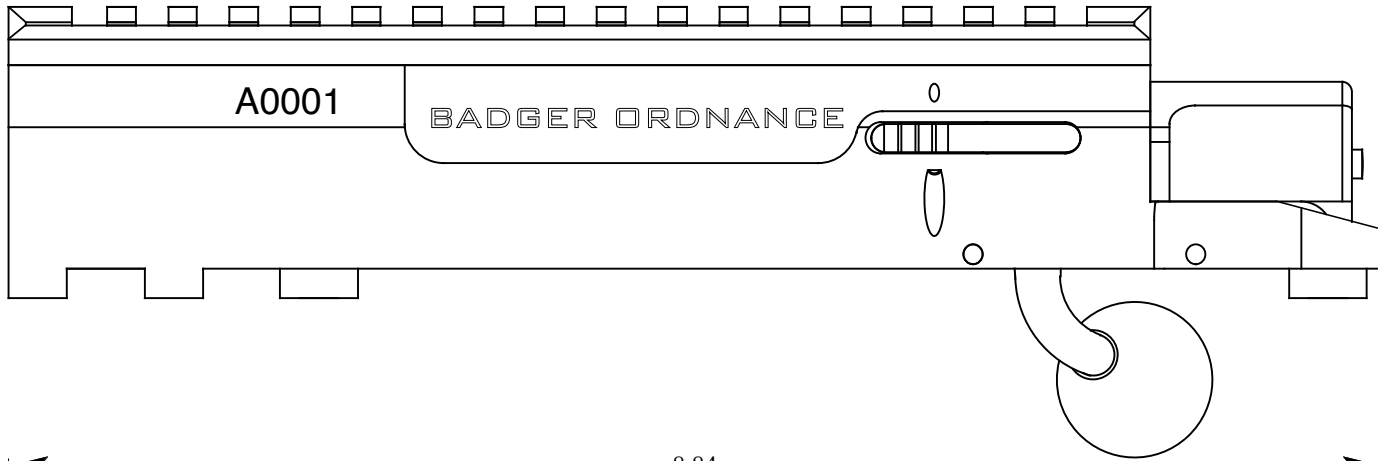
1209 SWIFT ST. N. KANSAS CITY, MO 64116
 816 421-4956 FAX 816 421-4958

Action Inlet M2008 & M2013 Short Action

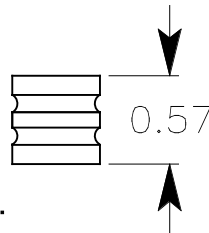
A	Dwg No.	100-20-01	Part No.	100-20		
				100-30		

ENGINEER: M. BORDSON

Scale NTS	Date: 1 June 2013	Page 2 of 3
-----------	-------------------	-------------



Pillar length if used with the Badger Ordnance M5 guard.



Unless otherwise specified
 Diminsions are in Inches
 TOLERANCES:
 ANGLES $\pm .5^\circ$
 FRACTIONS $\pm .015$
 .00 $\pm .01$
 .000 $\pm .005$
 .0000 $\pm .0005$

BADGER ORDNANCE

1209 SWIFT ST.
 816 421-4956

N. KANSAS CITY, MO 64116
 FAX 816 421-4958

Action Inlet M2008 & M2013 Short Action

A	Dwg No.	100-20-01	Part No.	100-20		
				100-30		

ENGINEER: M. BORDSON

Scale NTS

Date: 1 June 2013

Page 3 of 3

WARNING!

The assembly of this action into a rifle must be completed by a competent Gunsmith.

To remove firing pin assembly from bolt, hold bolt in right hand, bolt shroud facing you, with your left hand rotate firing pin assembly clockwise 180 degrees.

Remember the firing pin assembly is under spring load and will pop out towards you!

To reassemble reverse the above steps.

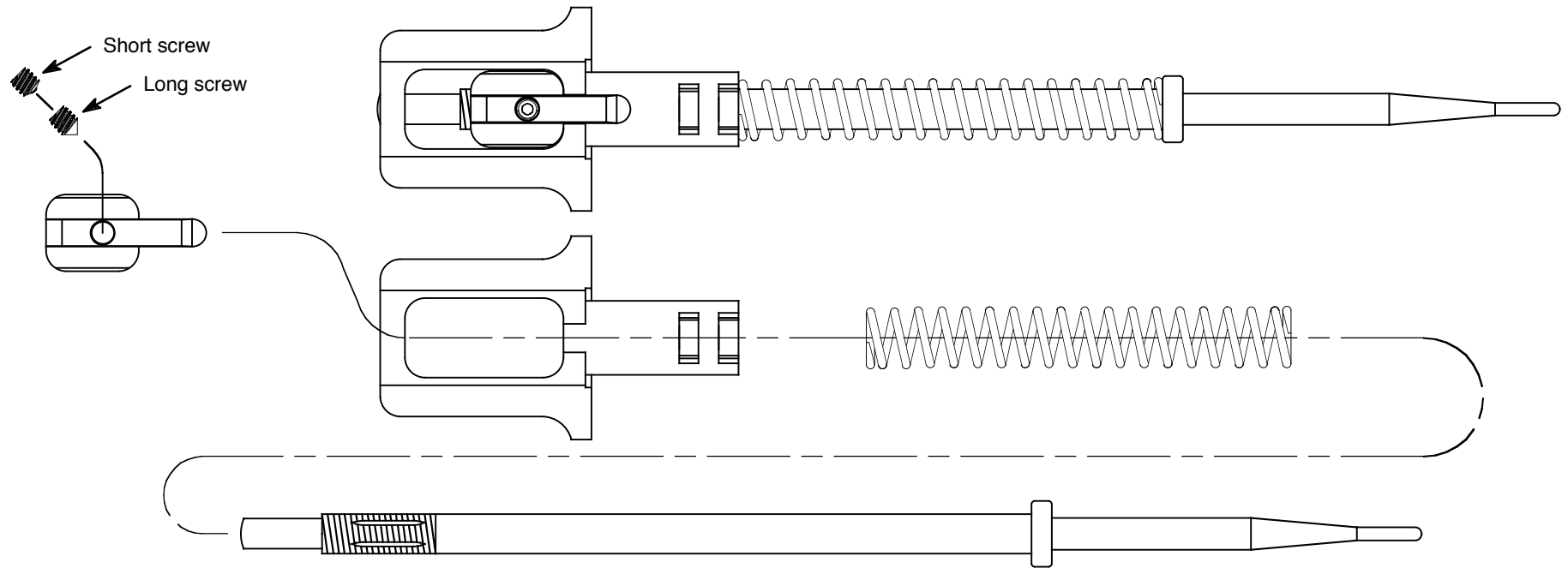
To remove firing pin or set protrusion, using a 1/16" hex (Allen) wrench, remove both set screws. There are 2 lengths of set screw, the long one goes in first. Screws are 4-40.

The firing pin will now thread in or out, be careful the spring and pin are under spring load.

Note that there are 4 (Four) grooves in the threaded portion of the Firing pin. When setting protrusion, the set screws must engage one of these 4 grooves.

Use blue Loctite on the last screw you install only!

Firing pin protrusion must be between .042" and .062".



The Firing pin assembly consists of:

- Firing pin
- Firing pin spring
- Bolt shroud
- Cocking piece
- Set screws X 2

Unless otherwise specified
 Diminsions are in Inches
 TOLERANCES:
 ANGLES $\pm .5^\circ$
 FRACTIONS $\pm .015$
 .00 $\pm .01$
 .000 $\pm .005$
 .0000 $\pm .0005$

ENGINEER: M. BORDSON

BADGER ORDNANCE LLC

1209 SWIFT ST.
816 421-4956

N. KANSAS CITY, MO 64116
FAX 816 421-4958

Assembly, Firing pin, M2008 & M2013

A	Dwg No.	Part No.		
	100-10-50	100-10-50 100-30-60		