



**Use of the 1005-222-03
Gas Cylinder Plug Valve fixture.**

With the screw backed all the way out, (fig. 1) slide plug assy. into the center of fixture. Turn screw in until valve is unseated to its maximum length (fig. 2) clean as necessary.

If it is being used for refinishing, follow the above instructions, then clean and de-grease as usual before refinishing, leave in fixture until part has been thru the stop bath.

Note: The screw is Stainless Steel and will not rust, but should be removed and cleaned after use in refinishing.

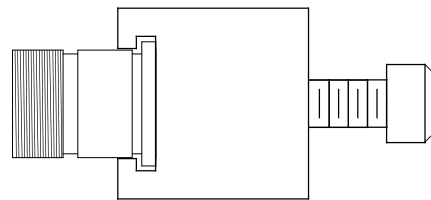


fig. 1

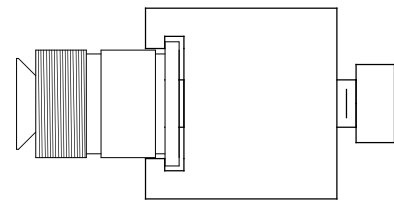


fig .2