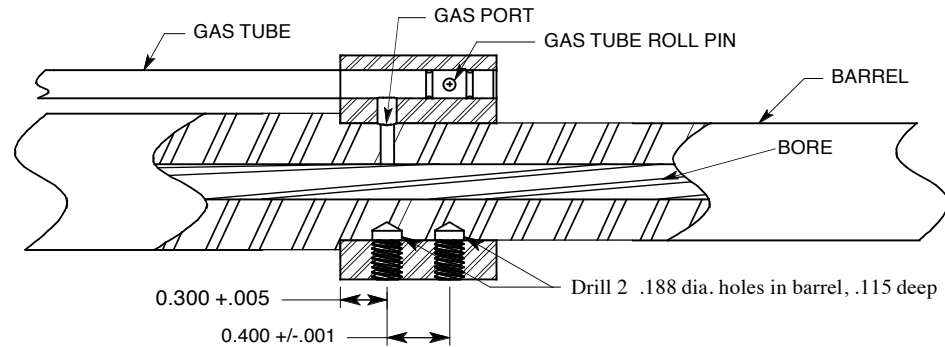
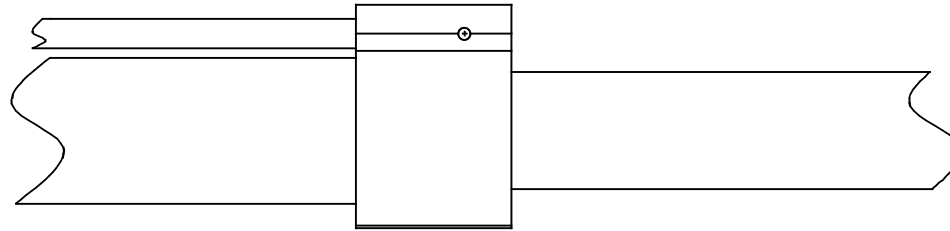


NOTE:

THIS UNIT IS FOR BARRELS WITH A .750" DIAMETER

1. ASSEMBLY MUST BE PERFORMED BY A COMPETENT GUNSMITH.
2. DRILL BLIND HOLES 180° FROM GAS PORT.
3. LOCATE 1 ST HOLE .300" FROM BARREL SHOULDER.
4. DRILL TO APPROPRIATE DEPTH AS INDICATED BELOW.
5. INSTALL GAS TUBE INTO MANIFOLD.
6. INSTALL MANIFOLD ONTO RIFLE,  
USE OF LOCKTITE IS NOT REQUIRED BUT IS RECOMMENDED



**RECOMENDED:**

Apply a small amount of #262 (red) Loctite to the set screws and around the gas port.

Unless otherwise specified  
Diminsions are in Inches  
TOLERANCES:  
ANGLES ± 30°  
FRACTIONS ±.015  
.00- .01  
.000- .005  
.0000- .0005

**BADGER ORDNANCE**

1209 Swift St  
816 421-4956

N. Kansas City, MO. 64116  
FAX 816 421-4958

**MK 12 Manifold assy**

Dwg No. 249-30-1	Part No. 249-30	Date 12 APRIL 12
------------------	-----------------	------------------

ENGINEER: M. BORDSON

Scale NTS

Page 1 of 1