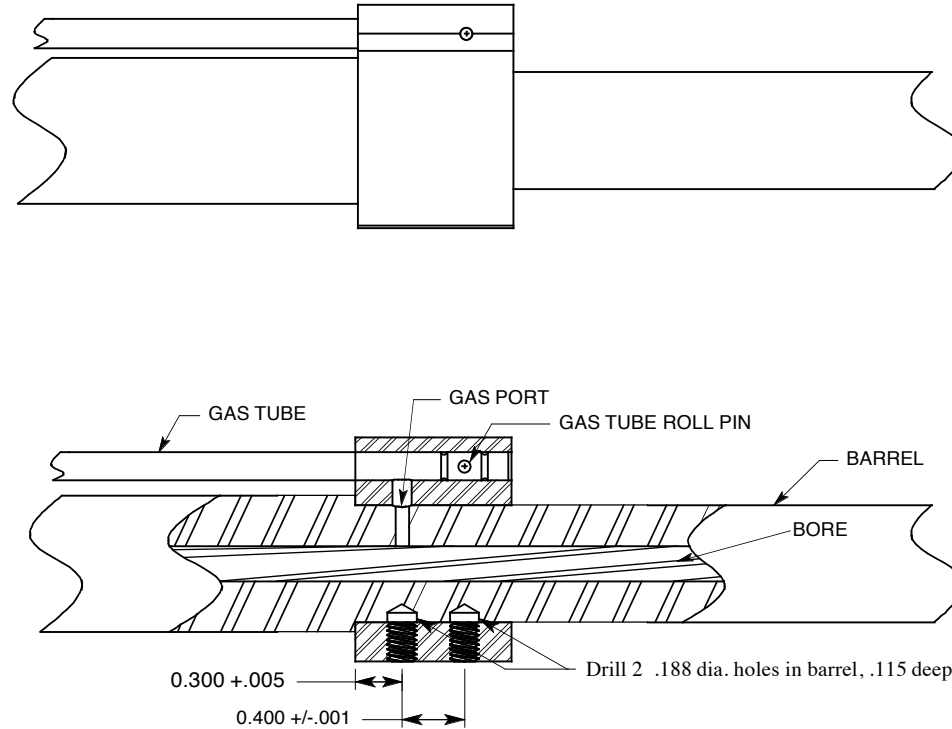


NOTE:

THIS UNIT IS FOR BARRELS WITH A .875" DIAMETER

1. ASSEMBLY MUST BE PERFORMED BY A COMPETENT GUNSMITH.
2. DRILL BLIND HOLES 180° FROM GAS PORT.
3. LOCATE 1st HOLE .300" FROM BARREL SHOULDER.
4. DRILL TO APPROPRIATE DEPTH AS INDICATED BELOW.
5. INSTALL GAS TUBE INTO MANIFOLD.
6. INSTALL MANIFOLD ONTO RIFLE, USE OF LOCKTITE IS NOT REQUIRED BUT IS RECOMMENDED



RECOMENDED:

Apply a small amount of #262 (red) Loctite to the set screws and around the gas port.

Unless otherwise specified
Diminsions are in Inches
TOLERANCES:
ANGLES ± 30°
FRACTIONS ± .015
.00- .01
.000- .005
.0000- .0005

BADGER ORDNANCE

1209 Swift St
816 421-4956

N. Kansas City, MO. 64116
FAX 816 421-4958

MK 12 Manifold assy

Dwg No. 249-31-1 Part No. 249-31 Date 12 APRIL 12

ENGINEER: M. BORDSON

Scale NTS

Page 1 of 1