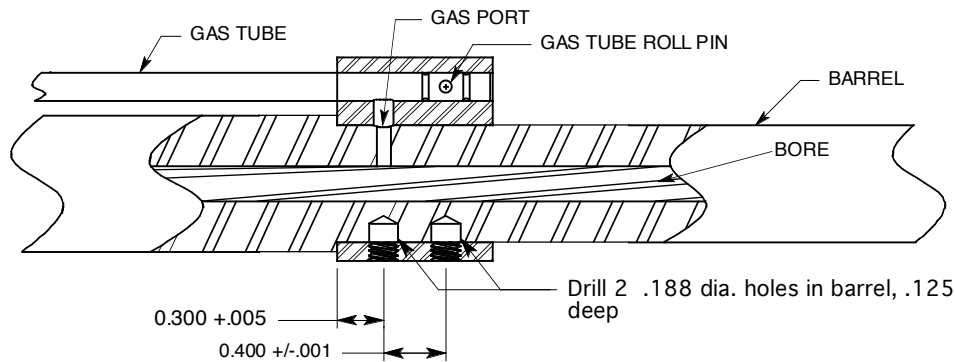
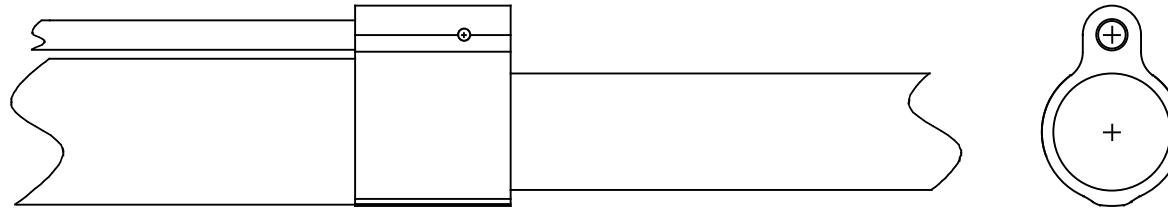


NOTE:

1. ASSEMBLY MUST BE PERFORMED BY A COMPETENT GUNSMITH.
2. DRILL BLIND HOLES 180° FROM GAS PORT.
3. LOCATE 1 ST HOLE .300" FROM BARREL SHOULDER.
4. DRILL TO APPROPRIATE DEPTH AS INDICATED BELOW.
5. INSTALL GAS TUBE INTO MANIFOLD.
6. INSTALL MANIFOLD ONTO RIFLE, USE OF LOCTITE IN NOT REQUIRED BUT IS RECOMMENDED



RECOMENDED:
 Apply a small amount of #262 (red) Loctite to the set screws and around the gas port.

Unless otherwise specified Diminions are in Inches TOLERANCES: ANGLES ± 30° FRACTIONS ±.015 .00- .01 .000- .005 .0000- .0005		BADGER ORDNANCE 1209 Swift St 816 421-4956 N. Kansas City, MO. 64116 FAX 816 421-4958	
TDX Manifold assy			
Dwg No.	249-69-1	Part No.	249-69 249-70
		Date	2 Jan 2016
ENGINEER: M. BORDSON		Scale	NTS
		Matl:	Stainless steel
		Page	1 of 1